

## Overall Summary

|                                 |                      |
|---------------------------------|----------------------|
| <b>Name</b>                     | <b>DMA Demo APAC</b> |
| <b>Number of Vehicles</b>       | 9                    |
| <b>Number of Drivers</b>        | 2                    |
| <b>Total Distance</b>           | 10409 km             |
| <b>Total Driving Time</b>       | 337 hours            |
| <b>Total Speed Violation</b>    | 536 events           |
| <b>Total Harsh Cornering</b>    | 272 incidents        |
| <b>Total Harsh Acceleration</b> | 207 incidents        |
| <b>Total Harsh Braking</b>      | 484 incidents        |
| <b>Unassigned Driver</b>        | 73.1%                |

## Driving Statistics by Vehicle

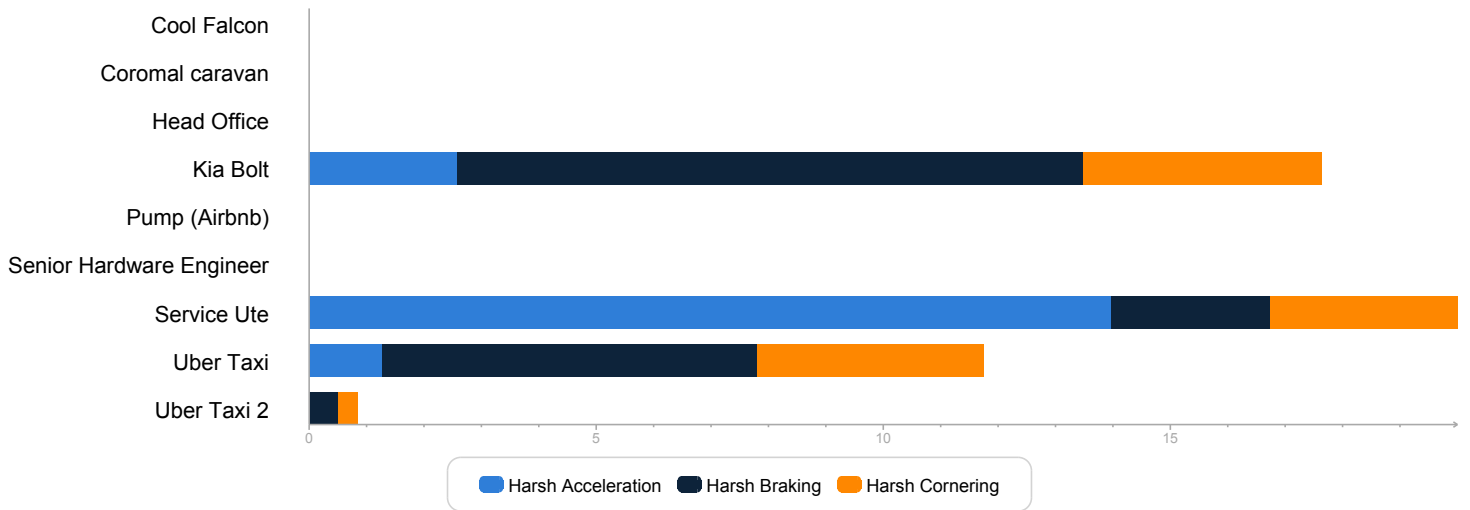
| Asset Name                       | Trips | Speeding (events) | Speed Limit | Top Speed | Avg Speed | Max Over Speed | Idling (percentage) | Harsh Driving (incidents per 100km) |
|----------------------------------|-------|-------------------|-------------|-----------|-----------|----------------|---------------------|-------------------------------------|
| 237895-Test SNB                  | 0     | 0                 | -           | - km/h    | - km/h    | - km/h         | -                   | -                                   |
| Communal Magical SnackBag        | 0     | 0                 | -           | - km/h    | - km/h    | - km/h         | -                   | -                                   |
| Cool Falcon                      | 45    | 0                 | -           | 120 km/h  | 30 km/h   | 0 km/h         | 30.8 %              | 0.0                                 |
| Coromal caravan                  | 7     | 0                 | -           | 109 km/h  | 79 km/h   | 0 km/h         | 1.9 %               | 0.0                                 |
| Depot                            | 0     | 0                 | -           | - km/h    | - km/h    | - km/h         | -                   | -                                   |
| Employee Backpack                | 0     | 0                 | -           | - km/h    | - km/h    | - km/h         | -                   | -                                   |
| Fremantle Warehouse              | 0     | 0                 | -           | - km/h    | - km/h    | - km/h         | -                   | -                                   |
| Guppy Door POC 1                 | 0     | 0                 | -           | - km/h    | - km/h    | - km/h         | -                   | -                                   |
| Guppy Door POC 2                 | 0     | 0                 | -           | - km/h    | - km/h    | - km/h         | -                   | -                                   |
| Gym Bag                          | 0     | 0                 | -           | - km/h    | - km/h    | - km/h         | -                   | -                                   |
| Handbag                          | 0     | 0                 | -           | - km/h    | - km/h    | - km/h         | -                   | -                                   |
| Head Office                      | 99    | 0                 | -           | 116 km/h  | 33 km/h   | 0 km/h         | 8.5 %               | 0.0                                 |
| Iman's Wifi                      | 0     | 0                 | -           | - km/h    | - km/h    | - km/h         | -                   | -                                   |
| Jackhammer                       | 0     | 0                 | -           | - km/h    | - km/h    | - km/h         | -                   | -                                   |
| K9 Department                    | 0     | 0                 | -           | - km/h    | - km/h    | - km/h         | -                   | -                                   |
| K9 Temperature SensorNode        | 0     | 0                 | -           | - km/h    | - km/h    | - km/h         | -                   | -                                   |
| Kia Bolt                         | 113   | 461               | -*          | 139 km/h  | 50 km/h   | 59 km/h        | 11.4 %              | 17.1                                |
| Laptop Bag                       | 0     | 0                 | -           | - km/h    | - km/h    | - km/h         | -                   | -                                   |
| Living Room temperature – Airbnb | 0     | 0                 | -           | - km/h    | - km/h    | - km/h         | -                   | -                                   |
| Production Department            | 0     | 0                 | -           | - km/h    | - km/h    | - km/h         | -                   | -                                   |
| Pump (Airbnb)                    | 1     | 0                 | -           | 2 km/h    | 0 km/h    | 0 km/h         | 100.0 %             | 0.0                                 |
| Repairs Toolbag                  | 0     | 0                 | -           | - km/h    | - km/h    | - km/h         | -                   | -                                   |
| Rugged Tablet                    | 0     | 0                 | -           | - km/h    | - km/h    | - km/h         | -                   | -                                   |
| Sales Dep                        | 0     | 0                 | -           | - km/h    | - km/h    | - km/h         | -                   | -                                   |
| Senior Hardware Engineer         | 225   | 0                 | -           | 120 km/h  | 17 km/h   | 0 km/h         | 60.1 %              | 0.0                                 |
| Service Centre                   | 0     | 0                 | -           | - km/h    | - km/h    | - km/h         | -                   | -                                   |
| Service Tools                    | 0     | 0                 | -           | - km/h    | - km/h    | - km/h         | -                   | -                                   |
| Service Ute                      | 147   | 75                | -*          | 89 km/h   | 27 km/h   | 29 km/h        | 34.3 %              | 19.4                                |
| Sheep (Airbnb)                   | 0     | 0                 | -           | - km/h    | - km/h    | - km/h         | -                   | -                                   |
| Toolbox                          | 0     | 0                 | -           | - km/h    | - km/h    | - km/h         | -                   | -                                   |
| Toolbox (GLE)                    | 0     | 0                 | -           | - km/h    | - km/h    | - km/h         | -                   | -                                   |
| Uber Taxi                        | 219   | 0                 | -           | 133 km/h  | 42 km/h   | 0 km/h         | 8.8 %               | 11.4                                |
| Uber Taxi 2                      | 110   | 0                 | -           | 117 km/h  | 28 km/h   | 0 km/h         | 30.7 %              | 0.8                                 |
| Work Bag                         | 0     | 0                 | -           | - km/h    | - km/h    | - km/h         | -                   | -                                   |

## Driving Statistics by Driver

| Driver Name | Trips | Speeding (events) | Top Speed | Avg Speed | Idling (percentage) | Harsh Driving (incidents per 100km) |
|-------------|-------|-------------------|-----------|-----------|---------------------|-------------------------------------|
| No Driver   | 706   | 0                 | 133 km/h  | 29 km/h   | 35.4 %              | 0.0                                 |
| Iman        | 113   | 461               | 139 km/h  | 50 km/h   | 11.4 %              | 0.0                                 |
| Jamie       | 147   | 75                | 89 km/h   | 27 km/h   | 34.3 %              | 0.0                                 |

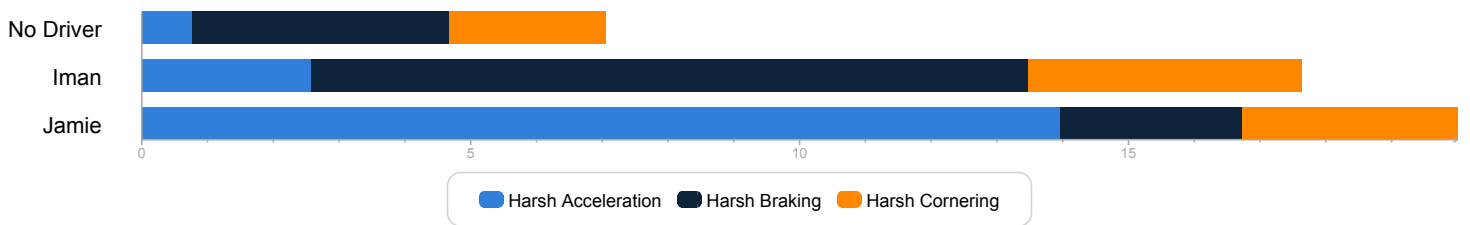
# Harsh Driving by Vehicle

(incidents per 100 km)

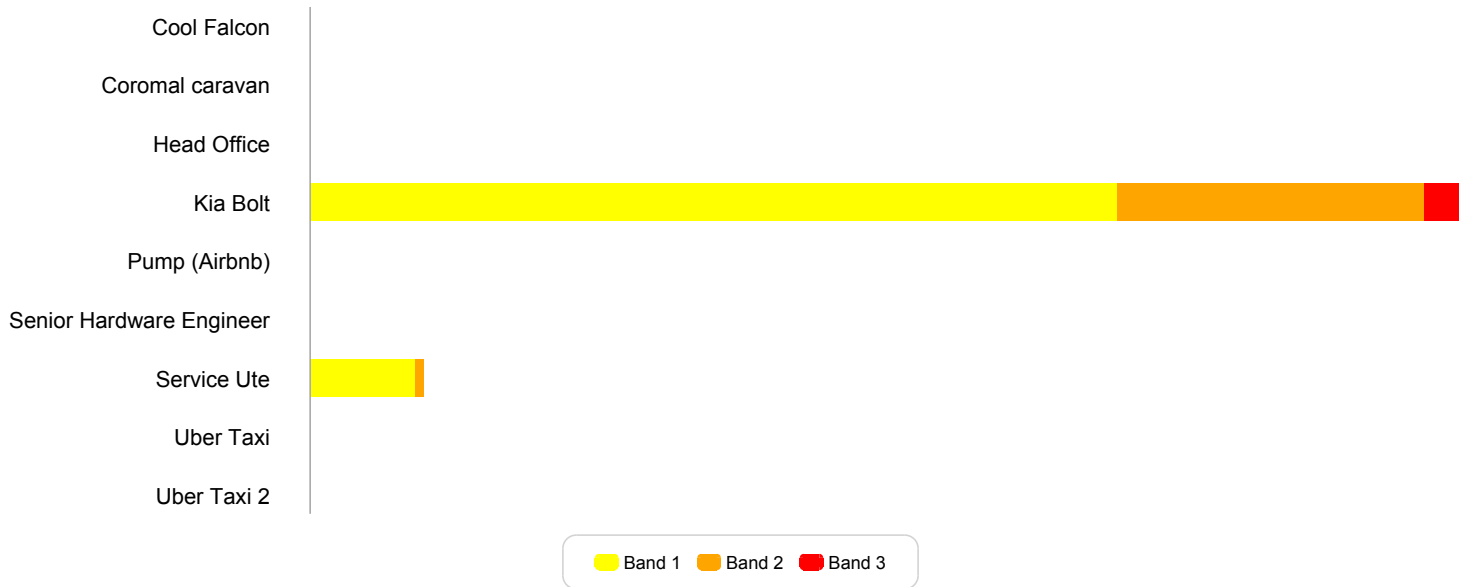


# Harsh Driving by Driver

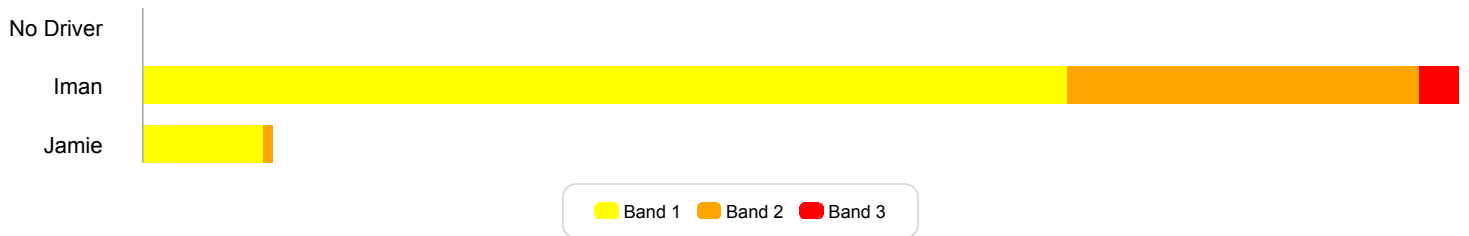
(incidents per 100 km)



## Speed Group Percentage by Vehicle



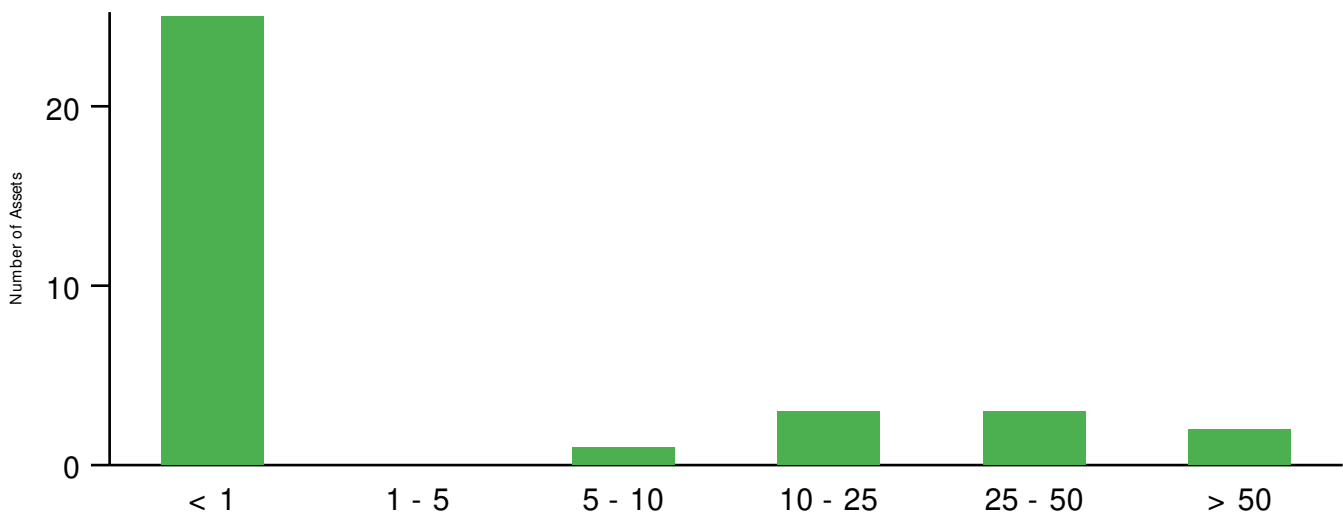
## Speed Group Percentage by Driver



# Asset Usage Statistics

| Asset Name                       | Reporting | Trips | Distance (km) | Usage (hrs) | Idling (hrs) |
|----------------------------------|-----------|-------|---------------|-------------|--------------|
| 237895-Test SNB                  | NO        | 0     | 0.0           | 0.0         | 0.0          |
| Communal Magical SnackBag        | NO        | 0     | 0.0           | 0.0         | 0.0          |
| Cool Falcon                      | YES       | 45    | 508.9         | 16.8        | 5.2          |
| Coromal caravan                  | YES       | 7     | 697.1         | 8.8         | 0.2          |
| Depot                            | NO        | 0     | 0.0           | 0.0         | 0.0          |
| Employee Backpack                | NO        | 0     | 0.0           | 0.0         | 0.0          |
| Fremantle Warehouse              | NO        | 0     | 0.0           | 0.0         | 0.0          |
| Guppy Door POC 1                 | NO        | 0     | 0.0           | 0.0         | 0.0          |
| Guppy Door POC 2                 | NO        | 0     | 0.0           | 0.0         | 0.0          |
| Gym Bag                          | NO        | 0     | 0.0           | 0.0         | 0.0          |
| Handbag                          | NO        | 0     | 0.0           | 0.0         | 0.0          |
| Head Office                      | NO        | 99    | 581.6         | 17.7        | 1.5          |
| Iman's Wifi                      | NO        | 0     | 0.0           | 0.0         | 0.0          |
| Jackhammer                       | NO        | 0     | 0.0           | 0.0         | 0.0          |
| K9 Department                    | NO        | 0     | 0.0           | 0.0         | 0.0          |
| K9 Temperature SensorNode        | NO        | 0     | 0.0           | 0.0         | 0.0          |
| Kia Bolt                         | NO        | 113   | 1437.2        | 28.6        | 3.3          |
| Laptop Bag                       | NO        | 0     | 0.0           | 0.0         | 0.0          |
| Living Room temperature – Airbnb | NO        | 0     | 0.0           | 0.0         | 0.0          |
| Production Department            | NO        | 0     | 0.0           | 0.0         | 0.0          |
| Pump (Airbnb)                    | YES       | 1     | 0.0           | 42.1        | 42.1         |
| Repairs Toolbag                  | NO        | 0     | 0.0           | 0.0         | 0.0          |
| Rugged Tablet                    | NO        | 0     | 0.0           | 0.0         | 0.0          |
| Sales Dep                        | NO        | 0     | 0.0           | 0.0         | 0.0          |
| Senior Hardware Engineer         | NO        | 225   | 911.7         | 54.4        | 32.7         |
| Service Centre                   | NO        | 0     | 0.0           | 0.0         | 0.0          |
| Service Tools                    | NO        | 0     | 0.0           | 0.0         | 0.0          |
| Service Ute                      | NO        | 147   | 819.4         | 30.6        | 10.5         |
| Sheep (Airbnb)                   | NO        | 0     | 0.0           | 0.0         | 0.0          |
| Toolbox                          | NO        | 0     | 0.0           | 0.0         | 0.0          |
| Toolbox (GLE)                    | NO        | 0     | 0.0           | 0.0         | 0.0          |
| Uber Taxi                        | NO        | 219   | 4849.1        | 116.8       | 10.3         |
| Uber Taxi 2                      | NO        | 110   | 603.9         | 21.5        | 6.6          |
| Work Bag                         | NO        | 0     | 0.0           | 0.0         | 0.0          |

## Asset Utilisation by Hour



## Asset Utilisation by Distance

